



New Physician Welcome Package



Welcome



Welcome to the Surrey Memorial Hospital. The following welcome package was created by Surrey Memorial Hospital and Medical Staff Association to provide helpful resources and contacts for you to access as an introduction to your new site. This brief document is to help orient you and to assist with your day to day transition into your new environment as a member of the MSA.

The information from this package has been gathered from the [Fraser Health MSA website](#) and www.smhmsa.ca.

How to Access:

- Parking
- Computer Access
- Hospital ID Badge

Maps

SMH Medical Staff Association (MSA)

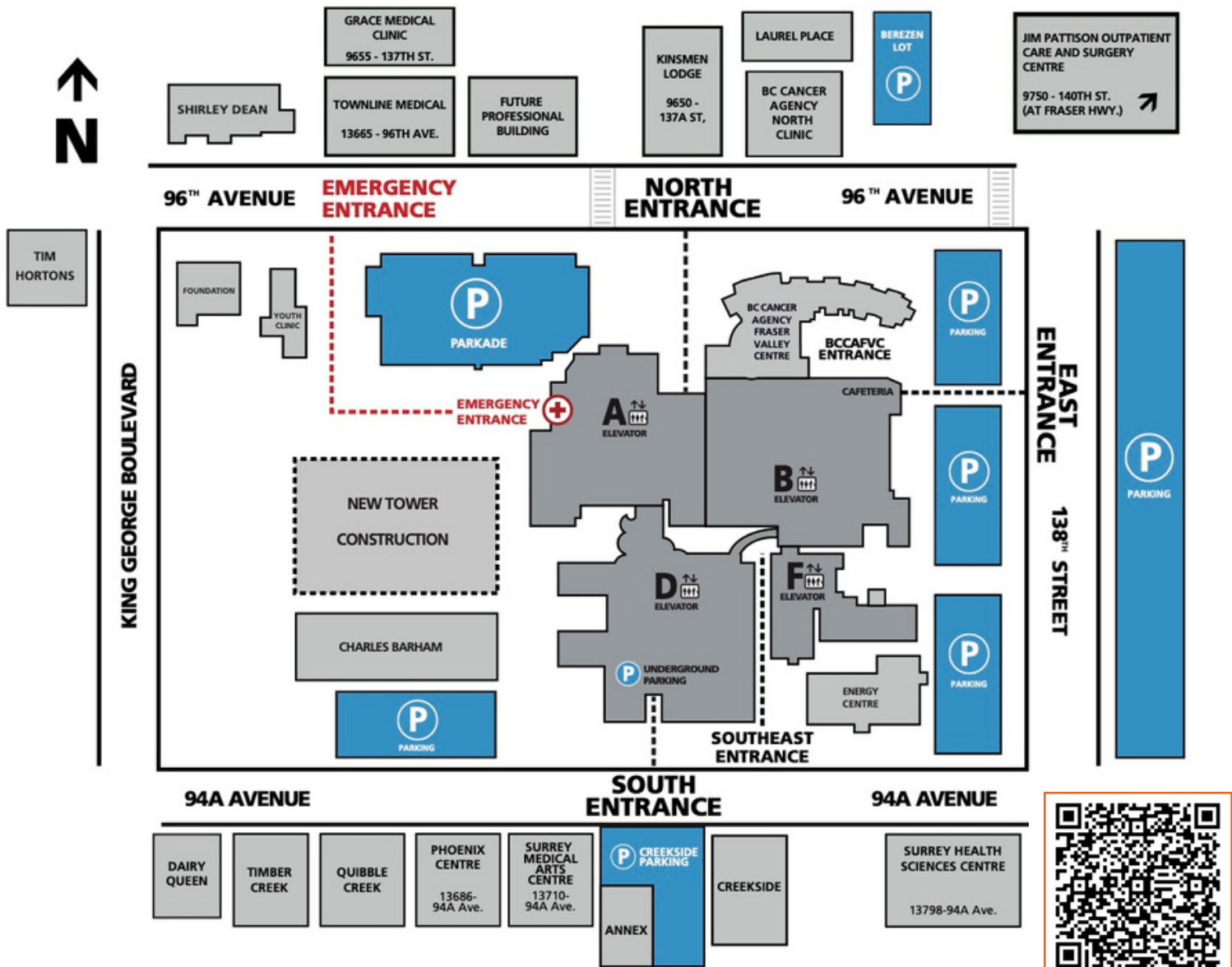
- Introduction
- Meetings & Dues

Medical Staff Association

- Executive Staff
- Involvement Opportunities
- Contact Details



Surrey Memorial Hospital Visitor's Wayfinding Guide



Scan QR code

Shirley Dean Pavillion
Adolescent Crisis Response Program
Adolescent Day Treatment Program - ADTP

Annex
A Place to Grow Child Care Centre
HEAL Clinic

Charles Barham
Education Centre
Rapid Access Clinic
Pediatric Clinics

Creekside
Daytox Program
Human Resources
Withdrawal Management Centre

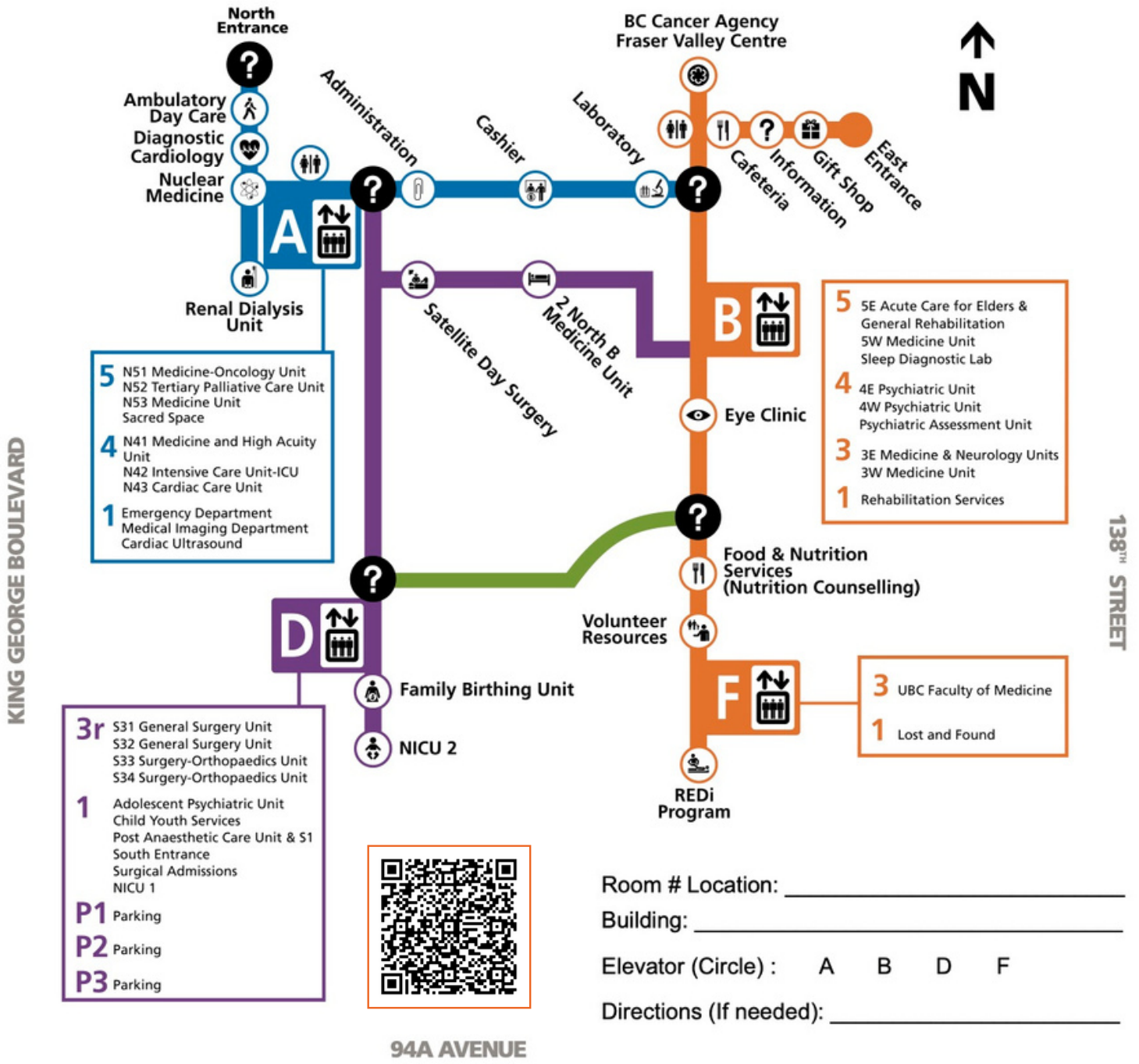
Laurel Place
High Intensity Rehabilitation Unit
Hospice

Foundation Building
Surrey Memorial Hospital Foundation

Kensington Building
Youth Clinic

Level 2 Map

96th AVENUE



Important Phone Numbers:

General Information	(604) 581-2211
Patient Information	Local 773349
Wayfinding Information Desk	Local 772123
Parking Administration	(604) 930-5440

Hospital Visiting Hours:

Please check with nurses' station for any visiting exceptions.

How to Access:

- **Parking**
- Computer Access
- Hospital ID Badge

Parking

Surrey Memorial Hospital is the largest of three regional hospitals in Fraser Health's integrated network of care; this includes providing primary, secondary, and tertiary services, including 24/7 emergency.

Physician Parking

Fraser Health offers short and long term parking for Physicians at all sites. Rates and access are site related.

Short Term - Less than 4 hours. Intended for rounds, pick up or drop offs. May stay longer but are required to purchase additional time through ticket dispenser.

Long Term - 24/7 Access to site.

- Passes are valid January 1 - December 31.
- Annual payment is required before access or hanger is provided.
- Passes are non-transferable.
- Passes are the property of Fraser Health. Lost/stolen passes are subject to a \$40.00 replacement fee.

PHYSICIAN PARKING APPLICATION FORM

[Physician Parking Application Form](#)

PLEASE NOTE: The application must be completed in full and include your full mailing address as well as your home hospital site.

FACILITIES AND SERVICES SEARCH

[Directory of Fraser Health Sites](#)



How to Access:

- Parking
- Computer Access
- Hospital ID Badge

Computer Access

Computer access for members of the Fraser Health Medical Staff is coordinated by the Credentials Office. Please contact the [Credentials Coordinator](#) assigned to your Department for more details.



Remote Access

Remote Access Remote access to the FHA Computer Network may be provided to members of the Fraser Health Medical Staff through [GO.fraserhealth.ca](https://go.fraserhealth.ca).

To use [GO.fraserhealth.ca](https://go.fraserhealth.ca) you will be required to complete Multi Factor Authentication (MFA).

If you have not setup Microsoft MFA using the Microsoft Authenticator App, view the How to install and setup Microsoft MFA quick reference guide or visit remotehelp.fraserhealth.ca for more information.

For Use verification code:

1. Open the Microsoft Authenticator app on your mobile device.
2. On your computer, enter the six-digit Microsoft verification code.
3. Click Continue.
4. Check phone for Approve sign in notification.
5. Tap Approve to sign in.

For more information go to remotehelp.fraserhealth.ca. Be sure to enter sfhr\ prior to your user ID. If you require assistance, please contact the Service Desk at [604-585-5544](tel:604-585-5544) or email MedicalStaffRemoteHelp@fraserhealth.ca

How to Access:

- Parking
- Computer Access
- Hospital ID Badge

Hospital ID Badge

Medical Staff must wear their photo ID at all times while on Fraser Health property.

Who can fill in the form?:

- Ideally, anyone who has access to the Fraser Health intranet network should use our eForm:
- Medical Administration can fill in the eform on behalf of the Medical Staff ahead of their placement.

All requests for Access, New, Replacements are to go through the [eForm](#):

- Requests for New ID's (first ID within the organizations) will require a photo with the application.
- Replacement requests (if current photo is greater than 5 years, a photo update will be required)
- Access requests, multiple access can be put on one card from Squamish hospital to Hope (must include badge number)

Where will the ID's be delivered:

- All medical staff ID is to be sent to their primary site for distribution by medical administration.

Contact

Protection And
Emergency
Management (PEM)
604.587.3834
PID@fraserhealth.ca

Lost your PID?
Please contact the
[Photo ID](#)
[office](#) immediately.

Other requests?
Contact the
Service Desk at
[604.585.5544](#)

SMH Medical Staff Association (MSA)

- Introduction
- Meetings & Dues

Meetings

All members are invited to attend our quarterly and annual meetings.

Membership Dues

The annual MSA membership fee is compulsory and payable yearly on the SMH MSA website. The next payment is due in **January 2023**.

Visit www.smhmsa.ca to learn more about the SMH MSA or email us at engagement@smhmsa.ca

Medical Staff Association

Medical Staff Associations (MSAs) are made up of facility-based physicians who engage with health authorities so that together they can address health care system challenges and support quality patient care.

MSAs are funded by Doctors of BC and the BC government through the [Facility Engagement Initiative \(link is external\)](#), a program of the Specialist Services Committee.

Seventy-five sites around BC are now involved in various stages of developing MSAs, with 57 of them approved for full funding to carry out activities.

Comprehensive information on Medical Staff Associations and Facility Engagement, can be found [here \(link is external\)](#).

With over 700 members strong, the SMH MSA values meaningful physician representation. The SMH MSA shares the voice of the medical staff through our membership, our values include:

Proactive Support

Be the credible organization that medical staff & administrators may rely on for support, information, and advice

Active Engagement

Collaborate with FHA site administration on issues impacting the medical staff & patient care

Wellness Promotion

Ensure the medical staff is heard, actively engaged, and effectively represented

Enhanced Professional Development

Pursue opportunities for professional development and networking

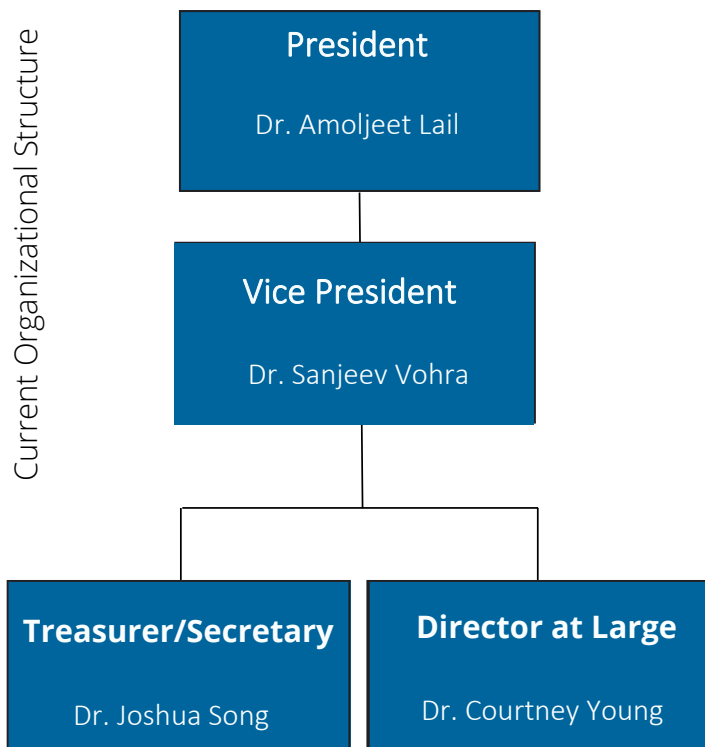
Support initiatives that promote continuous improvement, enhance quality, improve patient outcomes, and enrich the SMH/JPOCSC work environment

SMH Medical Staff Association (MSA)

- Executive Staff
- Involvement Opportunities
- Contact Details

Medical Staff Association

Current Organizational Structure



Last Updated September 2024

Medical Staff Association Board:

- President - Dr. Amoljeet Lail
- Vice President - Dr. Sanjeev Vohra
- Treasurer/Secretary - Dr. Joshua Song
- Director at Large - Dr. Courtney Young



**Have an idea for an engagement initiative?
Do it solo or as part of a team.**



Surrey Memorial Hospital and JPOCSC Medical Staff Association (MSA) invites you to apply for Facility Engagement funding of up to \$10,000. Projects must contribute to at least one of the MSA's three strategic goals. Further details and the application is on our [website](#).